



**T&K SHUTTERS**  
SPECIALISING IN QUALITY

## New England range

The New England range of shutters are made in the traditional way, using a tilt rod to open and close the blades.

This range can be made in five blade sizes, 32, 47, 64, 89 and 115mm. The range can be painted to any colour, and is also available with a sandblasted finish, in real wood, or covered in faux leather, faux suede or fabric.

This range can also be made out of other solid woods such as Oak, Teak, American Black Walnut, Cherry and Maple.



New England full-height, brown, 89mm louvre



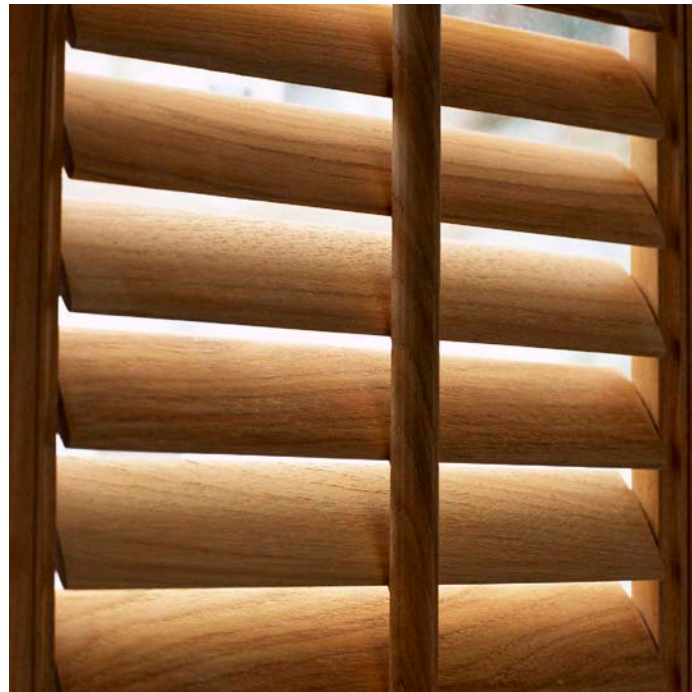
**T&K SHUTTERS**  
SPECIALISING IN QUALITY

## New England range

The New England range of shutters are made in the traditional way, using a tilt rod to open and close the blades.

This range can be made in five blade sizes, 32, 47, 64, 89 and 115mm. The range can be painted to any colour, and is also available with a sandblasted finish, in real wood, or covered in faux leather, faux suede or fabric.

This range can also be made out of other solid woods such as Oak, Teak, American Black Walnut, Cherry and Maple.



New England shutter teak, 64mm louvre, showing tilt rod



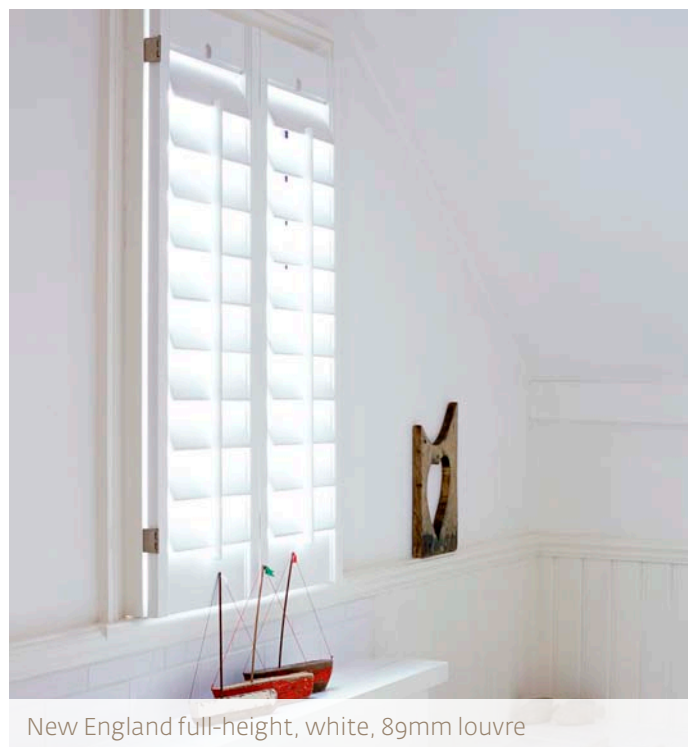
**T&K SHUTTERS**  
SPECIALISING IN QUALITY

## New England range

The New England range of shutters are made in the traditional way, using a tilt rod to open and close the blades.

This range can be made in five blade sizes, 32, 47, 64, 89 and 115mm. The range can be painted to any colour, and is also available with a sandblasted finish, in real wood, or covered in faux leather, faux suede or fabric.

This range can also be made out of other solid woods such as Oak, Teak, American Black Walnut, Cherry and Maple.



New England full-height, white, 89mm louvre



**T&K SHUTTERS**  
SPECIALISING IN QUALITY

## New England range

The New England range of shutters are made in the traditional way, using a tilt rod to open and close the blades.

This range can be made in five blade sizes, 32, 47, 64, 89 and 115mm. The range can be painted to any colour, and is also available with a sandblasted finish, in real wood, or covered in faux leather, faux suede or fabric.

This range can also be made out of other solid woods such as Oak, Teak, American Black Walnut, Cherry and Maple.



New England full-height, white, 89mm louvre



**T&K SHUTTERS**  
SPECIALISING IN QUALITY

## New England range

The New England range of shutters are made in the traditional way, using a tilt rod to open and close the blades.

This range can be made in five blade sizes, 32, 47, 64, 89 and 115mm. The range can be painted to any colour, and is also available with a sandblasted finish, in real wood, or covered in faux leather, faux suede or fabric.

This range can also be made out of other solid woods such as Oak, Teak, American Black Walnut, Cherry and Maple.



New England tier-on-tier, white, 89mm louvre



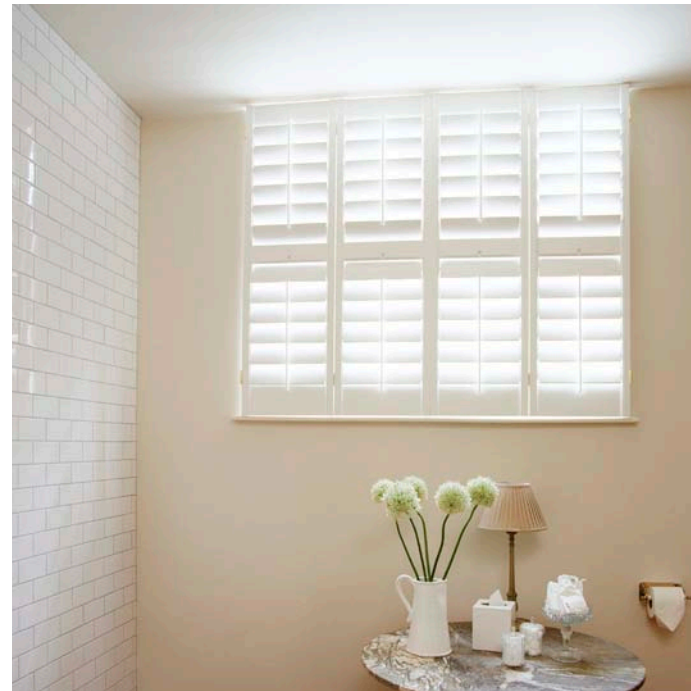
**T&K SHUTTERS**  
SPECIALISING IN QUALITY

## New England range

The New England range of shutters are made in the traditional way, using a tilt rod to open and close the blades.

This range can be made in five blade sizes, 32, 47, 64, 89 and 115mm. The range can be painted to any colour, and is also available with a sandblasted finish, in real wood, or covered in faux leather, faux suede or fabric.

This range can also be made out of other solid woods such as Oak, Teak, American Black Walnut, Cherry and Maple.



New England full-height solid panel, off-white, 89mm louvre



**T&K SHUTTERS**  
SPECIALISING IN QUALITY

## New England range

The New England range of shutters are made in the traditional way, using a tilt rod to open and close the blades.

This range can be made in five blade sizes, 32, 47, 64, 89 and 115mm. The range can be painted to any colour, and is also available with a sandblasted finish, in real wood, or covered in faux leather, faux suede or fabric.

This range can also be made out of other solid woods such as Oak, Teak, American Black Walnut, Cherry and Maple.



New England full-height, teak natural-finish, 47mm louvre



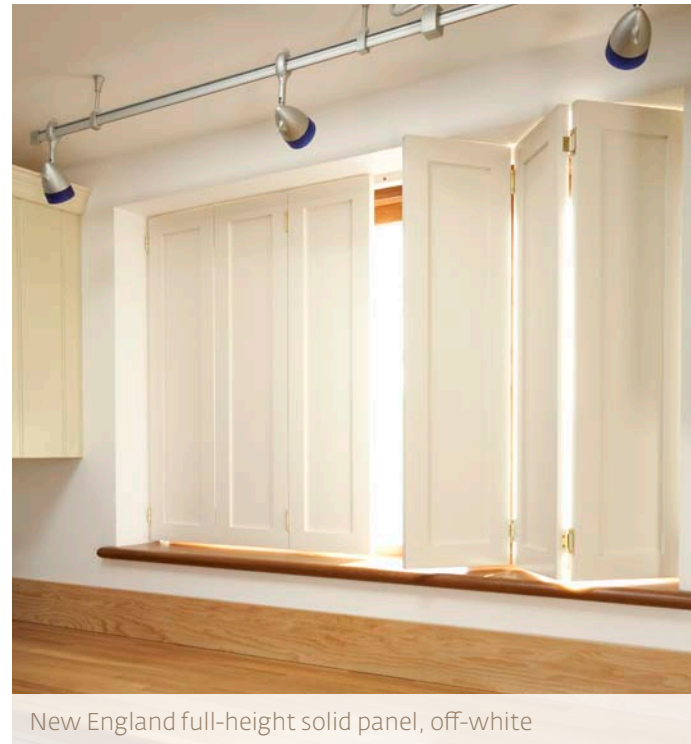
**T&K SHUTTERS**  
SPECIALISING IN QUALITY

## New England range

The New England range of shutters are made in the traditional way, using a tilt rod to open and close the blades.

This range can be made in five blade sizes, 32, 47, 64, 89 and 115mm. The range can be painted to any colour, and is also available with a sandblasted finish, in real wood, or covered in faux leather, faux suede or fabric.

This range can also be made out of other solid woods such as Oak, Teak, American Black Walnut, Cherry and Maple.



New England full-height solid panel, off-white



**T&K SHUTTERS**  
SPECIALISING IN QUALITY

## New England range

The New England range of shutters are made in the traditional way, using a tilt rod to open and close the blades.

This range can be made in five blade sizes, 32, 47, 64, 89 and 115mm. The range can be painted to any colour, and is also available with a sandblasted finish, in real wood, or covered in faux leather, faux suede or fabric.

This range can also be made out of other solid woods such as Oak, Teak, American Black Walnut, Cherry and Maple.



New England full-height, white, 64mm louvre



**T&K SHUTTERS**  
SPECIALISING IN QUALITY

## New England range

The New England range of shutters are made in the traditional way, using a tilt rod to open and close the blades.

This range can be made in five blade sizes, 32, 47, 64, 89 and 115mm. The range can be painted to any colour, and is also available with a sandblasted finish, in real wood, or covered in faux leather, faux suede or fabric.

This range can also be made out of other solid woods such as Oak, Teak, American Black Walnut, Cherry and Maple.



New England full-height, brown, 89mm louvre



**T&K SHUTTERS**  
SPECIALISING IN QUALITY

## New England range

The New England range of shutters are made in the traditional way, using a tilt rod to open and close the blades.

This range can be made in five blade sizes, 32, 47, 64, 89 and 115mm. The range can be painted to any colour, and is also available with a sandblasted finish, in real wood, or covered in faux leather, faux suede or fabric.

This range can also be made out of other solid woods such as Oak, Teak, American Black Walnut, Cherry and Maple.



New England full-height, white, 89mm louvre



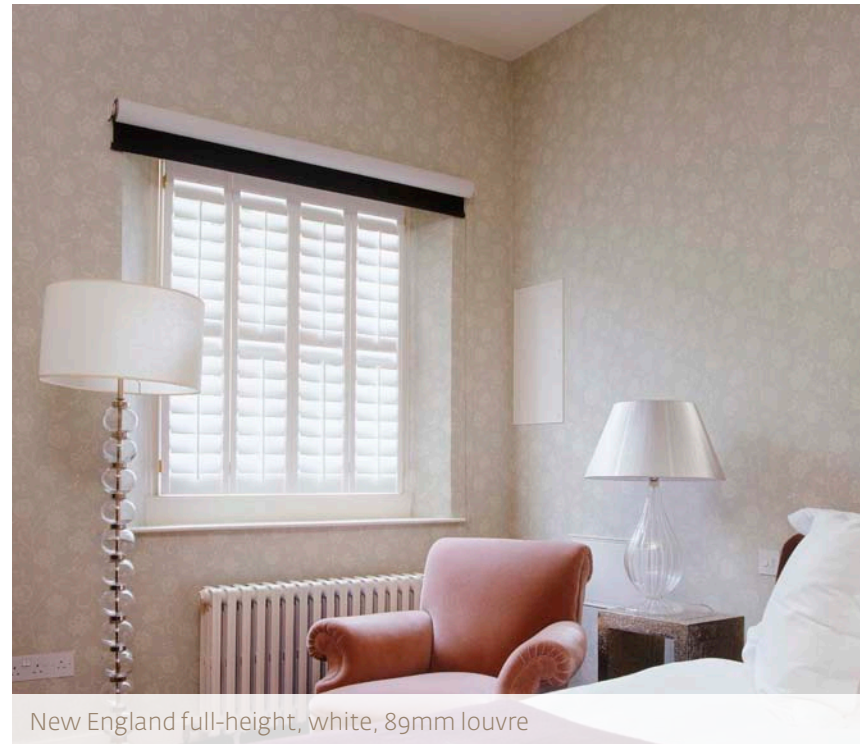
**T&K SHUTTERS**  
SPECIALISING IN QUALITY

## New England range

The New England range of shutters are made in the traditional way, using a tilt rod to open and close the blades.

This range can be made in five blade sizes, 32, 47, 64, 89 and 115mm. The range can be painted to any colour, and is also available with a sandblasted finish, in real wood, or covered in faux leather, faux suede or fabric.

This range can also be made out of other solid woods such as Oak, Teak, American Black Walnut, Cherry and Maple.



New England full-height, white, 89mm louvre



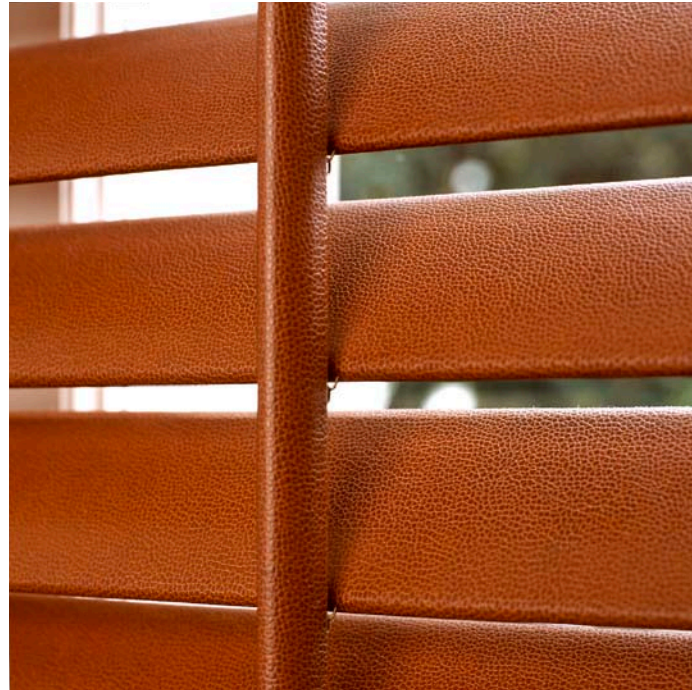
**T&K SHUTTERS**  
SPECIALISING IN QUALITY

## New England range

The New England range of shutters are made in the traditional way, using a tilt rod to open and close the blades.

This range can be made in five blade sizes, 32, 47, 64, 89 and 115mm. The range can be painted to any colour, and is also available with a sandblasted finish, in real wood, or covered in faux leather, faux suede or fabric.

This range can also be made out of other solid woods such as Oak, Teak, American Black Walnut, Cherry and Maple.



New England full-height, tan faux leather, 64mm louvre



**T&K SHUTTERS**  
SPECIALISING IN QUALITY

## New England range

The New England range of shutters are made in the traditional way, using a tilt rod to open and close the blades.

This range can be made in five blade sizes, 32, 47, 64, 89 and 115mm. The range can be painted to any colour, and is also available with a sandblasted finish, in real wood, or covered in faux leather, faux suede or fabric.

This range can also be made out of other solid woods such as Oak, Teak, American Black Walnut, Cherry and Maple.



New England tier-on-tier, duckegg blue, 64mm louvre



**T&K SHUTTERS**  
SPECIALISING IN QUALITY

## New England range

The New England range of shutters are made in the traditional way, using a tilt rod to open and close the blades.

This range can be made in five blade sizes, 32, 47, 64, 89 and 115mm. The range can be painted to any colour, and is also available with a sandblasted finish, in real wood, or covered in faux leather, faux suede or fabric.

This range can also be made out of other solid woods such as Oak, Teak, American Black Walnut, Cherry and Maple.



New England full-height, white, 64mm louvre



**T&K SHUTTERS**  
SPECIALISING IN QUALITY

## New England range

The New England range of shutters are made in the traditional way, using a tilt rod to open and close the blades.

This range can be made in five blade sizes, 32, 47, 64, 89 and 115mm. The range can be painted to any colour, and is also available with a sandblasted finish, in real wood, or covered in faux leather, faux suede or fabric.

This range can also be made out of other solid woods such as Oak, Teak, American Black Walnut, Cherry and Maple.



New England full-height, white, 64mm louvre



**T&K SHUTTERS**  
SPECIALISING IN QUALITY

## New England range

The New England range of shutters are made in the traditional way, using a tilt rod to open and close the blades.

This range can be made in five blade sizes, 32, 47, 64, 89 and 115mm. The range can be painted to any colour, and is also available with a sandblasted finish, in real wood, or covered in faux leather, faux suede or fabric.

This range can also be made out of other solid woods such as Oak, Teak, American Black Walnut, Cherry and Maple.



New England full-height, red, 64mm louvre



**T&K SHUTTERS**  
SPECIALISING IN QUALITY

## New England range

The New England range of shutters are made in the traditional way, using a tilt rod to open and close the blades.

This range can be made in five blade sizes, 32, 47, 64, 89 and 115mm. The range can be painted to any colour, and is also available with a sandblasted finish, in real wood, or covered in faux leather, faux suede or fabric.

This range can also be made out of other solid woods such as Oak, Teak, American Black Walnut, Cherry and Maple.



New England maple lacquered, 64mm louvre



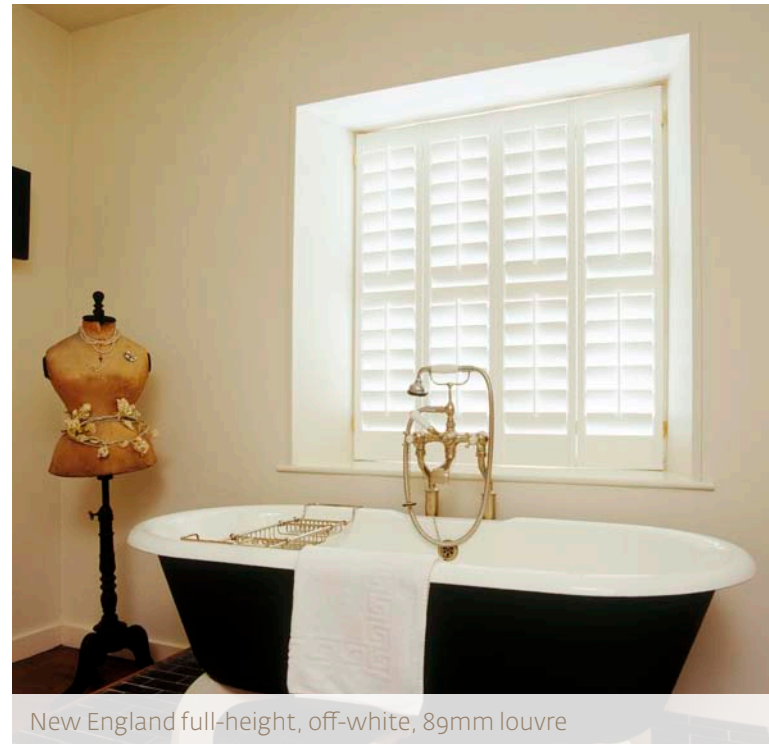
**T&K SHUTTERS**  
SPECIALISING IN QUALITY

## New England range

The New England range of shutters are made in the traditional way, using a tilt rod to open and close the blades.

This range can be made in five blade sizes, 32, 47, 64, 89 and 115mm. The range can be painted to any colour, and is also available with a sandblasted finish, in real wood, or covered in faux leather, faux suede or fabric.

This range can also be made out of other solid woods such as Oak, Teak, American Black Walnut, Cherry and Maple.



For expert advice on the perfect  
shutters for your home or business,  
please contact us.

T&K Shutters,  
Rathevan,  
Portlaoise,  
Co. Laois,  
Ireland

T. 057 866 0779  
F. 057 866 0779  
M. 087 236 2482  
E. [info@tkshutters.ie](mailto:info@tkshutters.ie)

[www.tkshutters.ie](http://www.tkshutters.ie)