



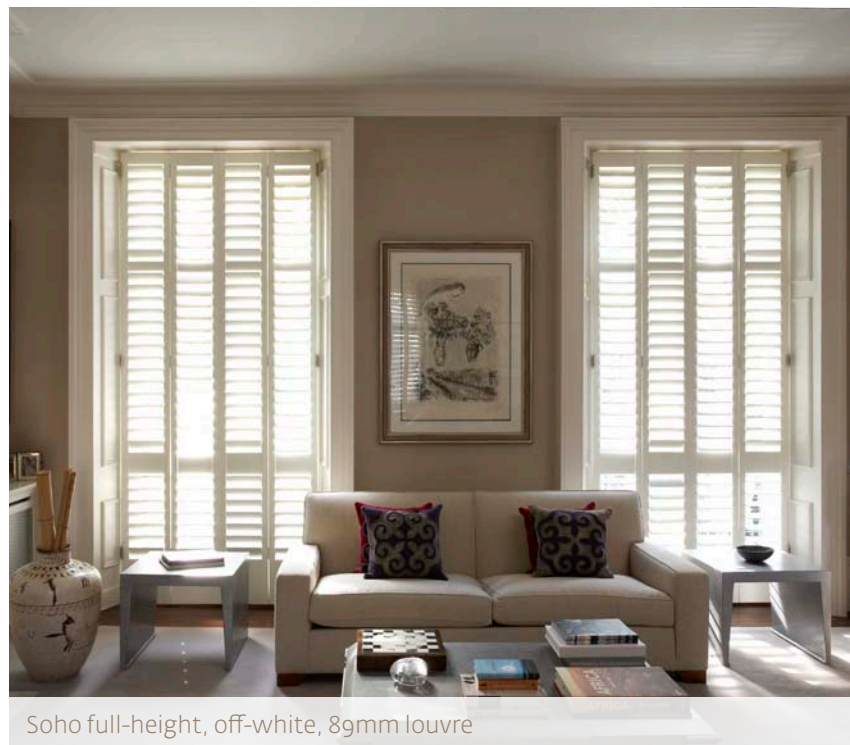
T&K SHUTTERS
SPECIALISING IN QUALITY

Soho range

Soho is also a unique design. Using the same hidden tilt mechanism as Manhattan, the Soho blades are rebated to lie flush in their frame, giving an ultra-sleek panel. An added benefit to this style is that more light is excluded when the blades are closed.

The Soho range is available in three blade sizes: 64, 89 and 115mm. The shutters can be finished in real wood, painted in any colour, sandblasted or covered in faux leather, faux suede or fabric.

Shutters can also be made out of other solid woods such as Oak, Teak, American Black Walnut, Cherry and Maple.



Soho full-height, off-white, 89mm louvre



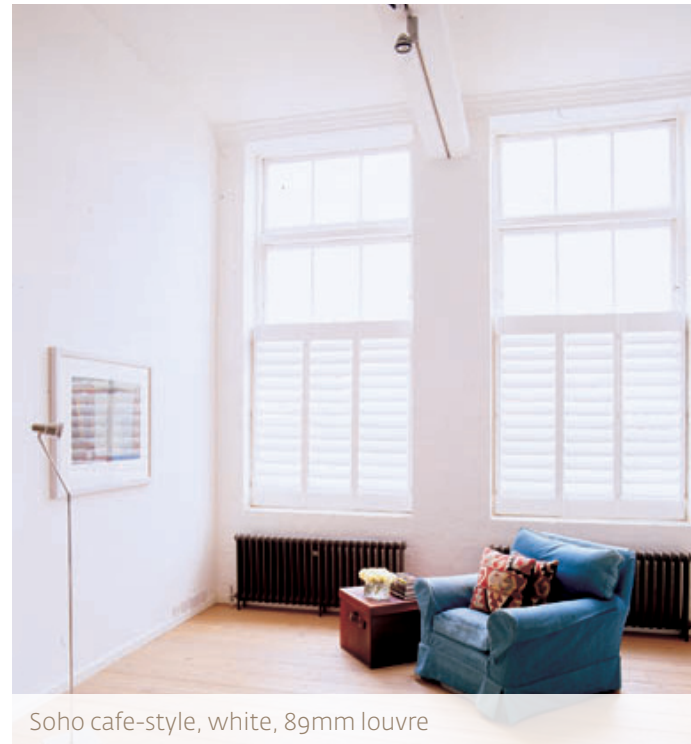
T&K SHUTTERS
SPECIALISING IN QUALITY

Soho range

Soho is also a unique design. Using the same hidden tilt mechanism as Manhattan, the Soho blades are rebated to lie flush in their frame, giving an ultra-sleek panel. An added benefit to this style is that more light is excluded when the blades are closed.

The Soho range is available in three blade sizes: 64, 89 and 115mm. The shutters can be finished in real wood, painted in any colour, sandblasted or covered in faux leather, faux suede or fabric.

Shutters can also be made out of other solid woods such as Oak, Teak, American Black Walnut, Cherry and Maple.



Soho cafe-style, white, 89mm louvre



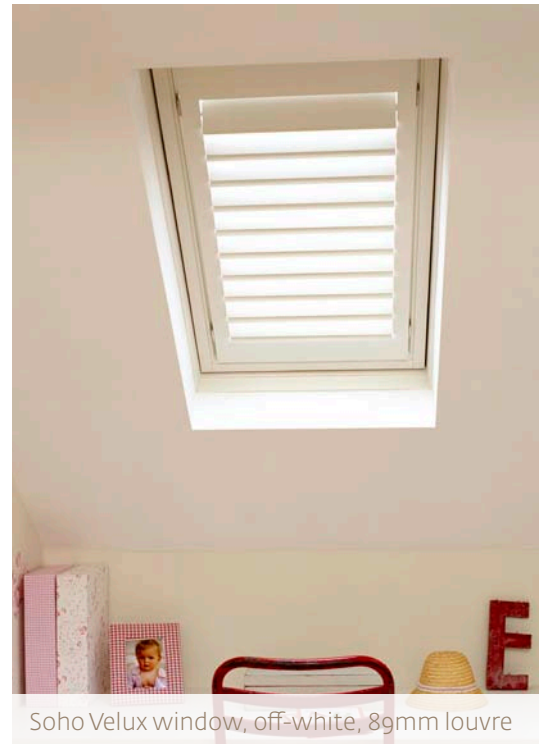
T&K SHUTTERS
SPECIALISING IN QUALITY

Soho range

Soho is also a unique design. Using the same hidden tilt mechanism as Manhattan, the Soho blades are rebated to lie flush in their frame, giving an ultra-sleek panel. An added benefit to this style is that more light is excluded when the blades are closed.

The Soho range is available in three blade sizes: 64, 89 and 115mm. The shutters can be finished in real wood, painted in any colour, sandblasted or covered in faux leather, faux suede or fabric.

Shutters can also be made out of other solid woods such as Oak, Teak, American Black Walnut, Cherry and Maple.



Soho Velux window, off-white, 89mm louvre



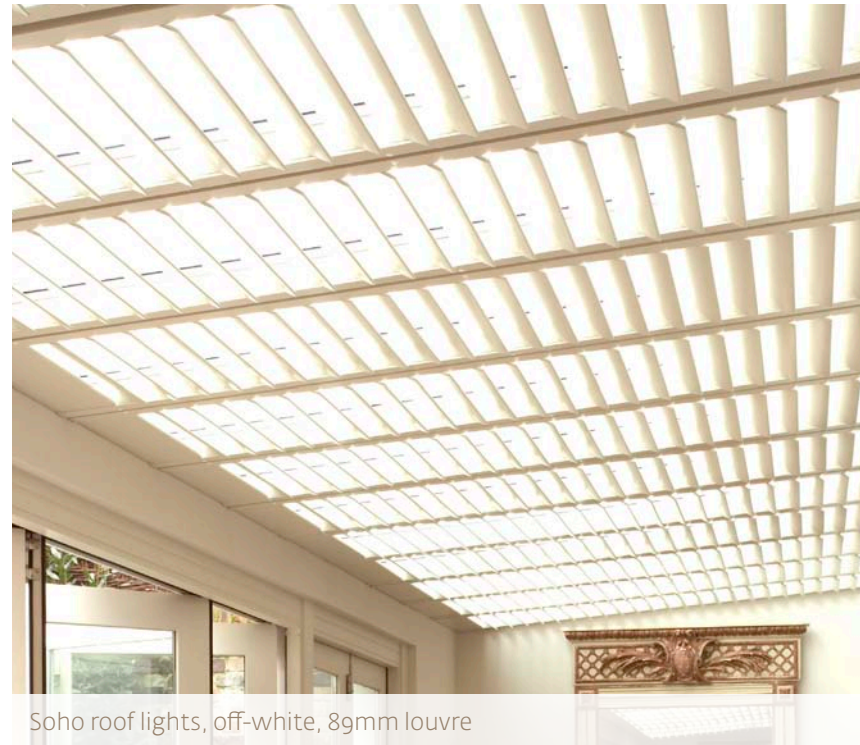
T&K SHUTTERS
SPECIALISING IN QUALITY

Soho range

Soho is also a unique design. Using the same hidden tilt mechanism as Manhattan, the Soho blades are rebated to lie flush in their frame, giving an ultra-sleek panel. An added benefit to this style is that more light is excluded when the blades are closed.

The Soho range is available in three blade sizes: 64, 89 and 115mm. The shutters can be finished in real wood, painted in any colour, sandblasted or covered in faux leather, faux suede or fabric.

Shutters can also be made out of other solid woods such as Oak, Teak, American Black Walnut, Cherry and Maple.



Soho roof lights, off-white, 89mm louvre

For expert advice on the perfect
shutters for your home or business,
please contact us.

T&K Shutters,
Rathevan,
Portlaoise,
Co. Laois,
Ireland

T. 057 866 0779
F. 057 866 0779
M. 087 236 2482
E. info@tkshutters.ie

www.tkshutters.ie